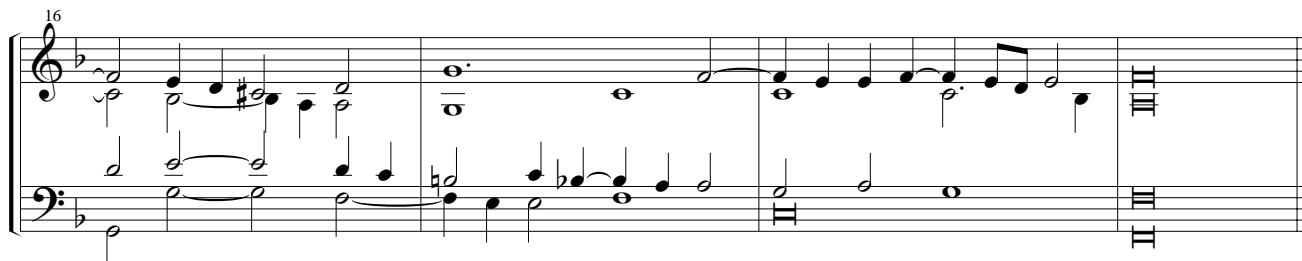
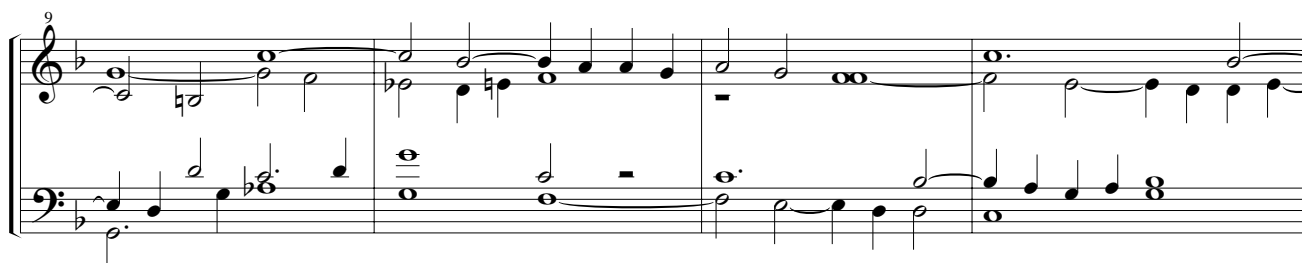
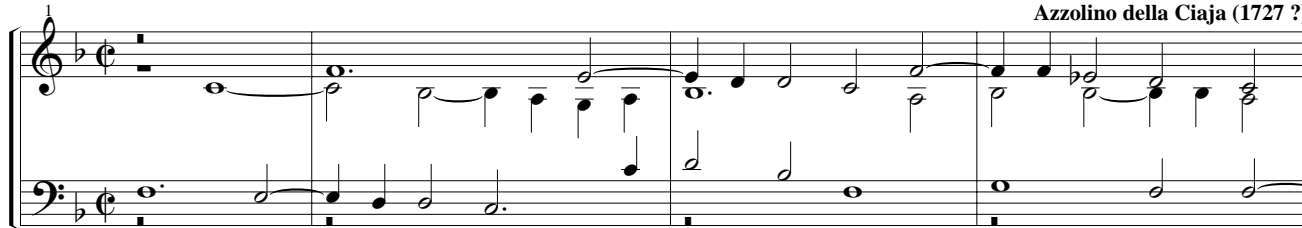


Ricercari per Organo

Di Tuoni Misti P:• Ricercare

Azzolino della Ciaja (1727 ?)



2• Ricercare



5

9

13

17

20

24

28

3°. *Ricercare*

5

9

13

17

21

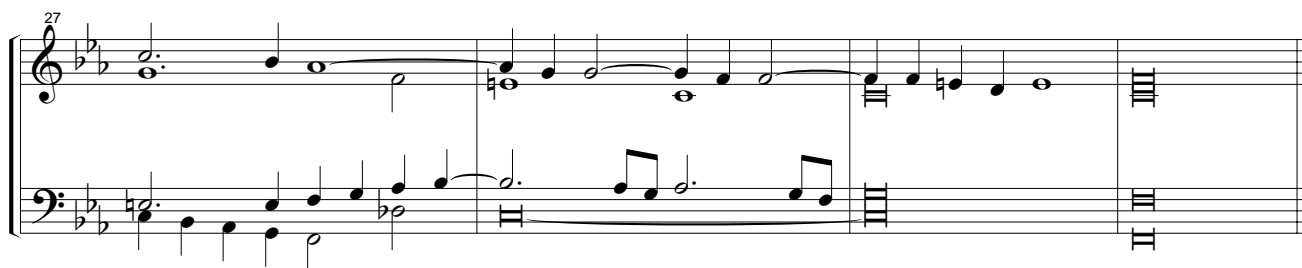
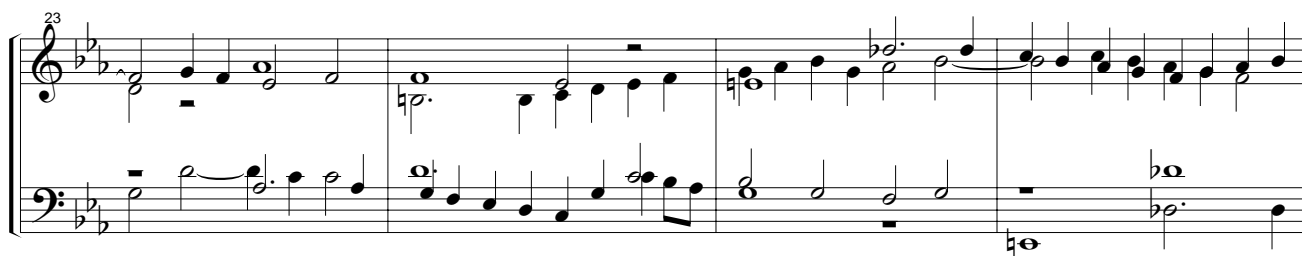
4°. Ricercare

6

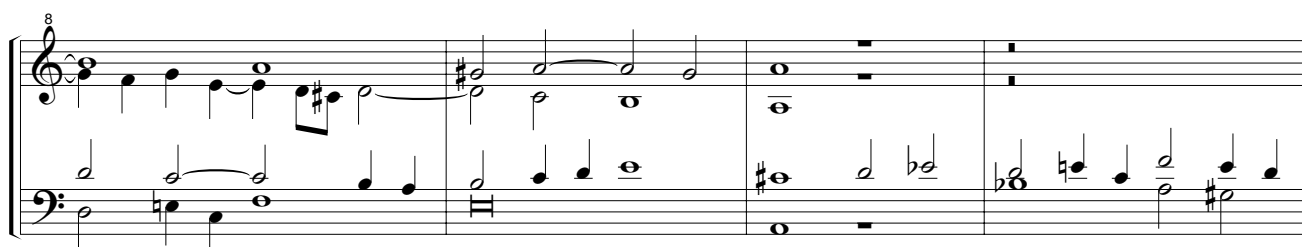
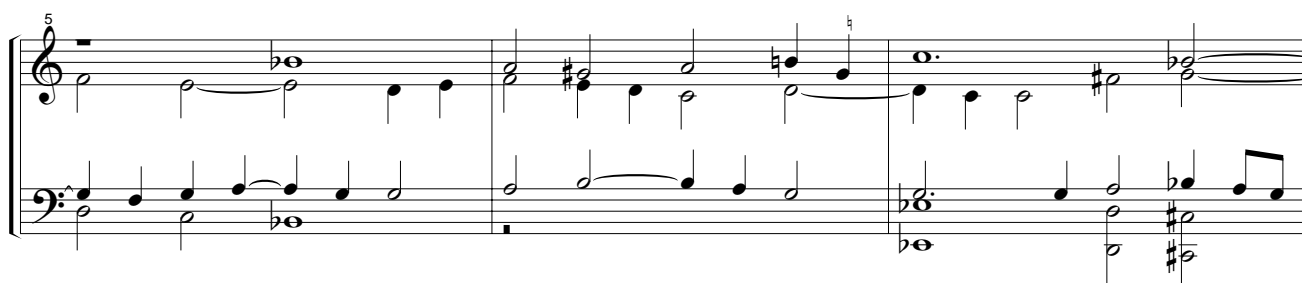
11

15

19



5°. Ricercare



[illegible]

19

Musical score for 'The Rose Tree' (Meisterlied). The score is written for voice and piano. The voice part is in treble clef, and the piano accompaniment is in bass clef. The key signature has one flat (B-flat), and the time signature is 3/4. The score consists of four measures. The first measure shows the voice entering with a half note G4 and a quarter note A4, while the piano plays a half note G2 and a quarter note A2. The second measure continues the melody. The third measure shows the voice playing a half note G4 and a quarter note A4, while the piano plays a half note G2 and a quarter note A2. The fourth measure shows the voice playing a half note G4 and a quarter note A4, while the piano plays a half note G2 and a quarter note A2.

6°. *Ricerca*

Vero Rovescio

A musical score for the song 'The Rose Tree'. The score is written for a single melodic line on a treble clef staff. The key signature is one sharp (F#), and the time signature is 4/4. The melody begins with a quarter rest, followed by a series of eighth and quarter notes. The piece concludes with a final quarter note and a repeat sign. The lyrics 'The Rose Tree' are written below the staff, aligned with the melody.

9

Musical score for 'The Rose Tree' in G major, 2/4 time. The score consists of two staves: Treble and Bass. The melody is in the Treble staff, and the bass line is in the Bass staff. The key signature has one sharp (F#). The tempo is marked 'Moderato'. The score is divided into four measures. The first measure contains a treble staff with a melody starting on G4 and a bass staff with a bass line starting on G2. The second measure contains a treble staff with a melody starting on A4 and a bass staff with a bass line starting on A2. The third measure contains a treble staff with a melody starting on B4 and a bass staff with a bass line starting on B2. The fourth measure contains a treble staff with a melody starting on C5 and a bass staff with a bass line starting on C3. The score ends with a double bar line.

13

Musical score for 'The Rose Tree' (Measures 13-15). The score is written for voice and piano. The voice part (treble clef) has a key signature of one flat (B-flat) and a 3/4 time signature. The piano accompaniment (bass clef) has a key signature of one flat (B-flat) and a 3/4 time signature. The melody in the voice part is: G4 (quarter), A4 (quarter), Bb4 (quarter), A4 (quarter), G4 (quarter), F4 (quarter), E4 (quarter), D4 (quarter), C4 (half). The piano accompaniment consists of a steady eighth-note pattern in the right hand and a steady quarter-note pattern in the left hand, both in the key of B-flat major.

